

Smarter Disaster Recovery

Recover from natural disasters and secure FEMA emergency funds more quickly with automated real-time asset inventory from BlynCSy

Empowering State and Local Agencies for Faster Disaster Recovery

Natural disasters can wreak havoc on infrastructure, leaving roads, bridges, and other critical assets damaged or destroyed. For state and local Departments of Transportation (DOTs), the aftermath of such events poses significant challenges—not only in terms of physical recovery but also in securing federal emergency funding and FEMA reimbursements.

The traditional methods of assessing damage through manual inspections are often time-consuming, costly, and resource-intensive, further delaying recovery efforts.

\$237 - \$665m

Outstanding FEMA recovery claims, according to National Association of Counties (NACo)

1 - 3 years

Typical Claim Turnaround Time from Incident to Payment and Closeout

2,500

non-COVID related disasters rising to the level of a presidentially declared incident

The High Costs of Manual Inspections

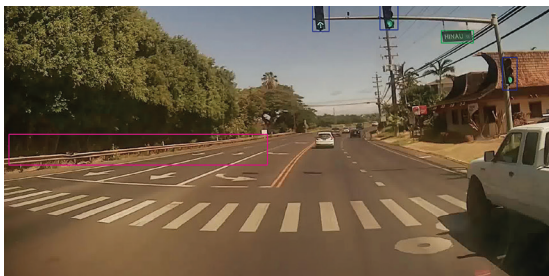
After a disaster, agencies typically spend weeks, if not months, assessing damage manually. According to industry estimates, these processes can consume more than 10% of an agency's overall disaster recovery budget, not to mention the opportunity cost of diverting skilled labor away from direct recovery work. With recovery costs from recent disasters like hurricanes and wildfires reaching billions of dollars, reducing these overheads is more critical than ever.

A Proven Partner for State, County and Local Agencies

While BlynCSy's disaster recovery services are innovative, our track record in supporting DOTs across the country is well-established. We currently work with the Hawaii Department of Transportation (DOT), Alaska DOT, Alabama DOT, Utah DOT, the Port Authority of New York & New Jersey, the City of New York, and the City of Fort Worth. Our technology has been instrumental in helping these agencies maintain their infrastructure in peak condition, and now, we're extending that expertise to disaster recovery.

Real-World Impact: Lahaina Wildfires

The devastating Lahaina wildfires in 2023 serve as a stark reminder of the destructive power of natural disasters. By analyzing before-and-after imagery from such events, BlynCSy can provide state and local agencies with the actionable insights they need to not only recover but also secure critical federal funding more quickly.



Before and after imagery just one week apart shows the utter devastation that the 2023 Lahaina wildfires caused. The slow and expensive recovery efforts themselves can inflict millions more in damage to the economy.

BlynCSy: Revolutionizing Disaster Recovery with AI

BlynCSy offers a transformative solution for DOTs facing these challenges. Our cutting-edge technology automates the process of road asset inventory and damage assessment by leveraging AI and high-resolution imagery. Here's how we help:

» Automated Damage Assessment

Using before-and-after imagery, our AI analyzes damage to road assets, identifying where signs are missing, pavement repairs are needed, and other infrastructure damage. This allows agencies to quickly assess the full extent of the damage without deploying human inspectors to dangerous or inaccessible areas.

» Significant Cost Savings

By automating asset inventory and damage assessment, BlynCSy helps agencies save 90% or more compared to traditional manual inspection processes. This frees up financial resources that can be better spent on immediate recovery efforts.

» Accelerated Access to Federal Funds

With rapid and accurate damage reports, DOTs can expedite their applications for FEMA reimbursements and other emergency response funds. The faster an agency can provide detailed and verifiable damage assessments, the quicker they can access the federal support necessary for recovery.

